

# Fountain Wind Project EIR

Public Scoping Meeting | January 24, 2019

Doors Open: 6:30 p.m.

Presentation & Public Comments: 7:00 p.m.



# Agenda

- Introductions
- Purpose of the Meeting
- Project Overview
- CEQA Process Overview
- Pre-scoping Activities
- Scoping: Environmental Impacts and Alternatives
- Public Comments

# Introductions

- Shasta County
  - Department of Resource Management, Planning Division
  - Lio Salazar, AICP, Senior Planner, (530) 225-5532, [lsalazar@co.shasta.ca.us](mailto:lsalazar@co.shasta.ca.us)
  - CEQA Lead Agency (responsible for the EIR)
  - Decision-maker for the requested Use Permit 16-007
- Environmental Science Associates
  - Janna Scott, Project Manager
  - Environmental Consultant to the County
- Avangrid Renewables, Pacific Wind Development, LLC, Applicant
- Other Public Agencies
- Members of the Public

# Purpose of the Meeting

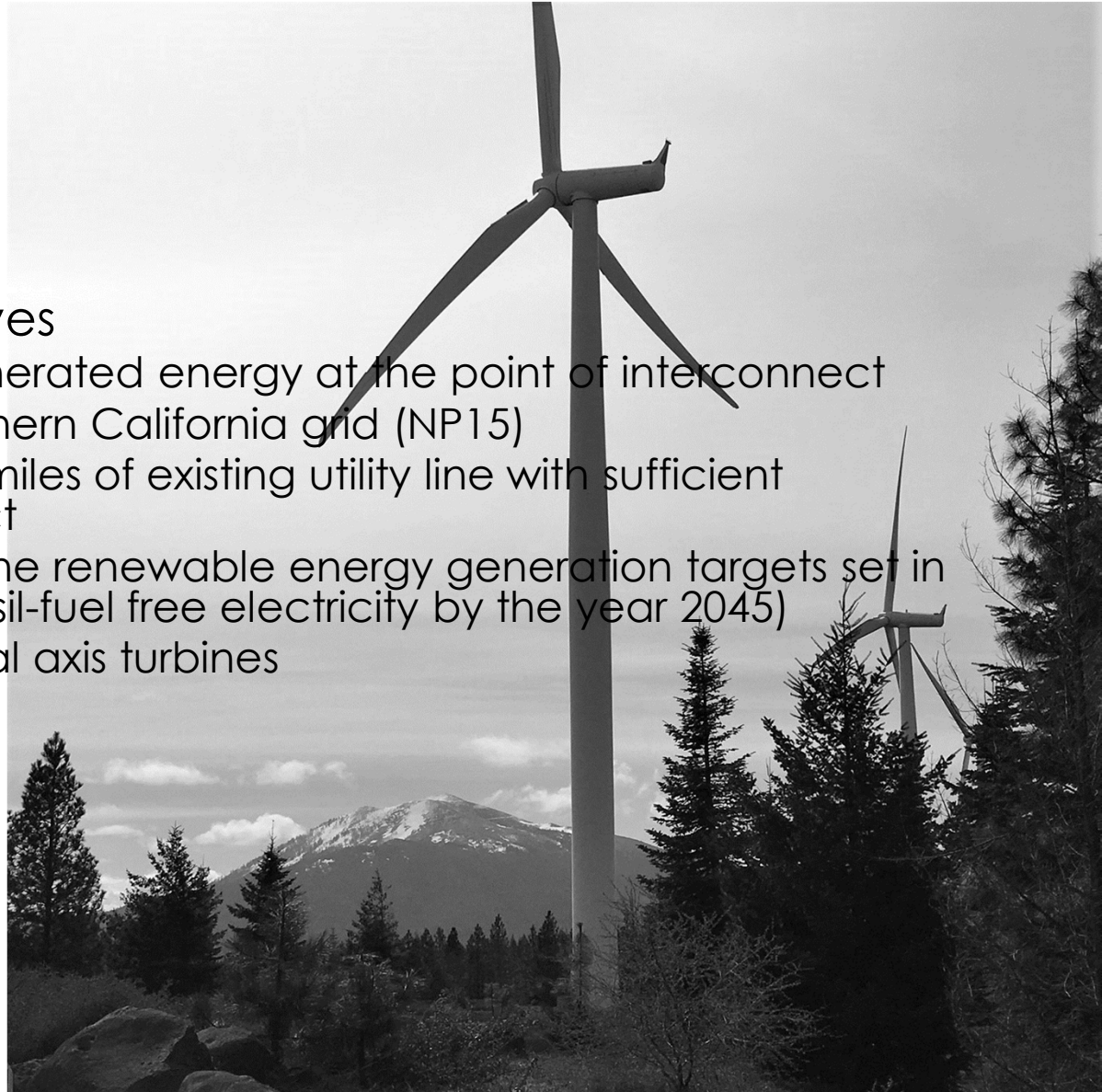


For us to hear from YOU!

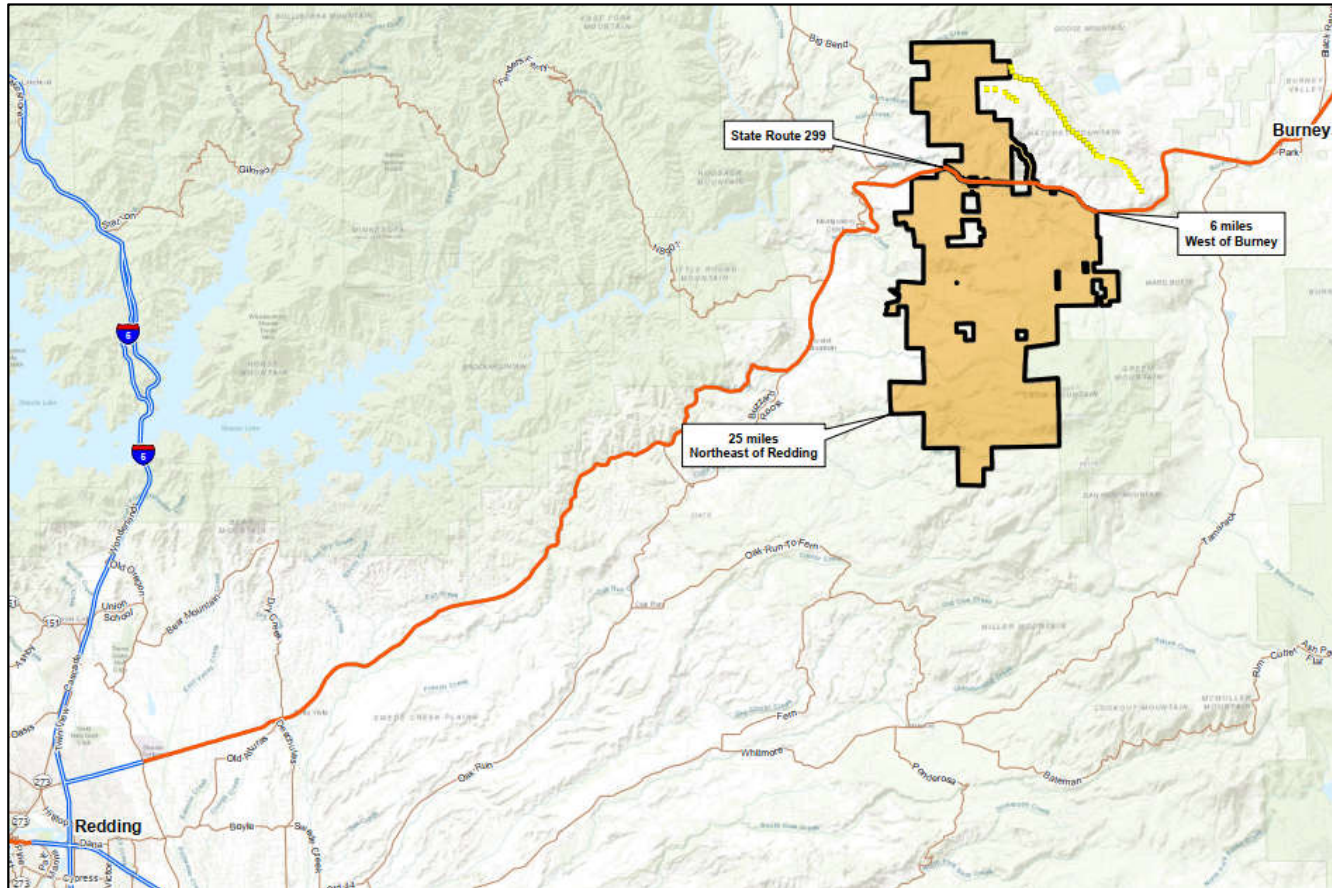
Your questions and ideas are welcome and invited.

# Project Overview

- Applicant's Project Objectives
  - Provide 200 MW of wind-generated energy at the point of interconnect
  - Interconnect within the northern California grid (NP15)
  - Locate the project within 3 miles of existing utility line with sufficient capacity to serve the project
  - Assist California in meeting the renewable energy generation targets set in Senate Bill 100 (i.e., 100% fossil-fuel free electricity by the year 2045)
  - Use state-of-the-art horizontal axis turbines



# Vicinity Map

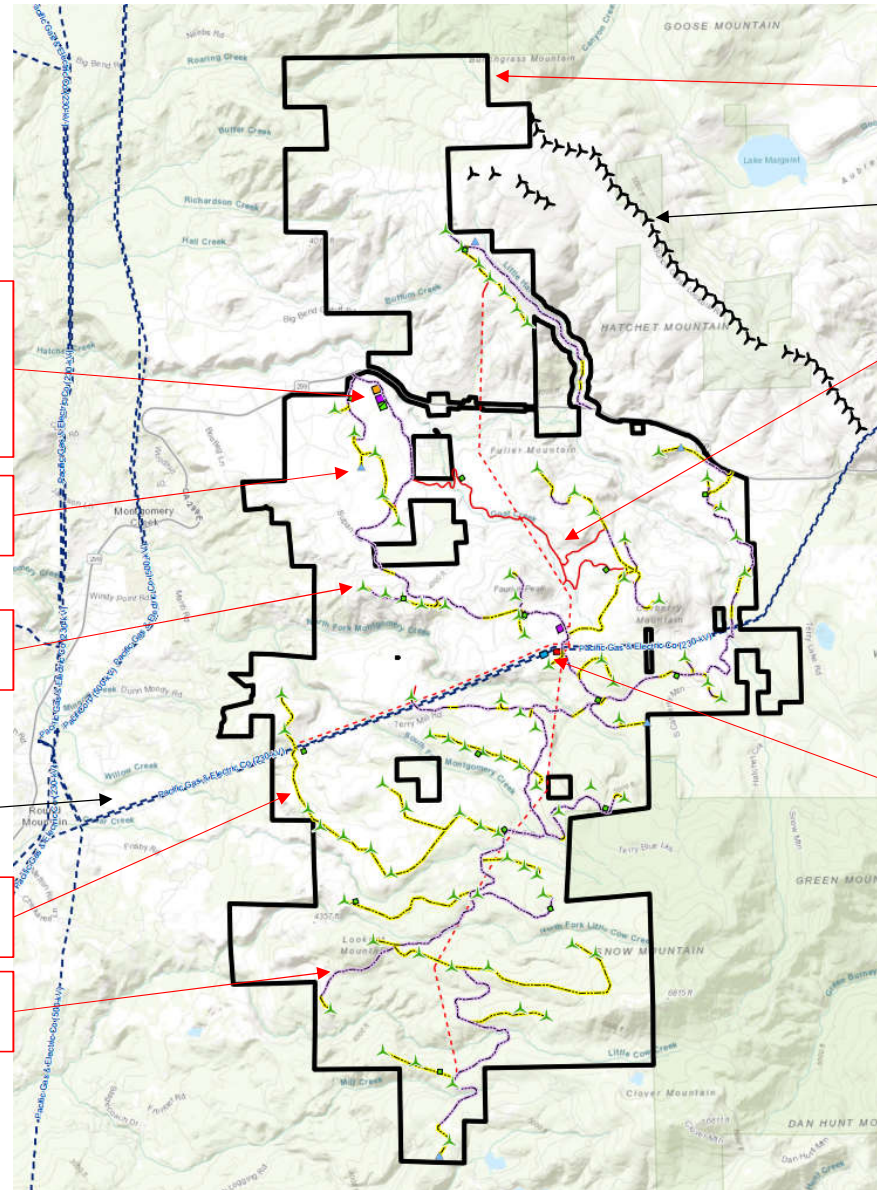


## Legend

- Existing Hatchet Ridge Wind Farm Turbine
- Interstate
- Highway
- Major Road
- Project Boundary



# Facilities



Proposed boundary (black solid)

Existing turbines (black-Hatchet Ridge)

Proposed overhead line (red dotted) and underground line (red solid)

Proposed substation (red) and switchyard/interconnection (blue)

Proposed construction lay-down yard (green), batch plant (purple), and O&M facility (orange)

Proposed met tower (blue)

Proposed turbines (green)

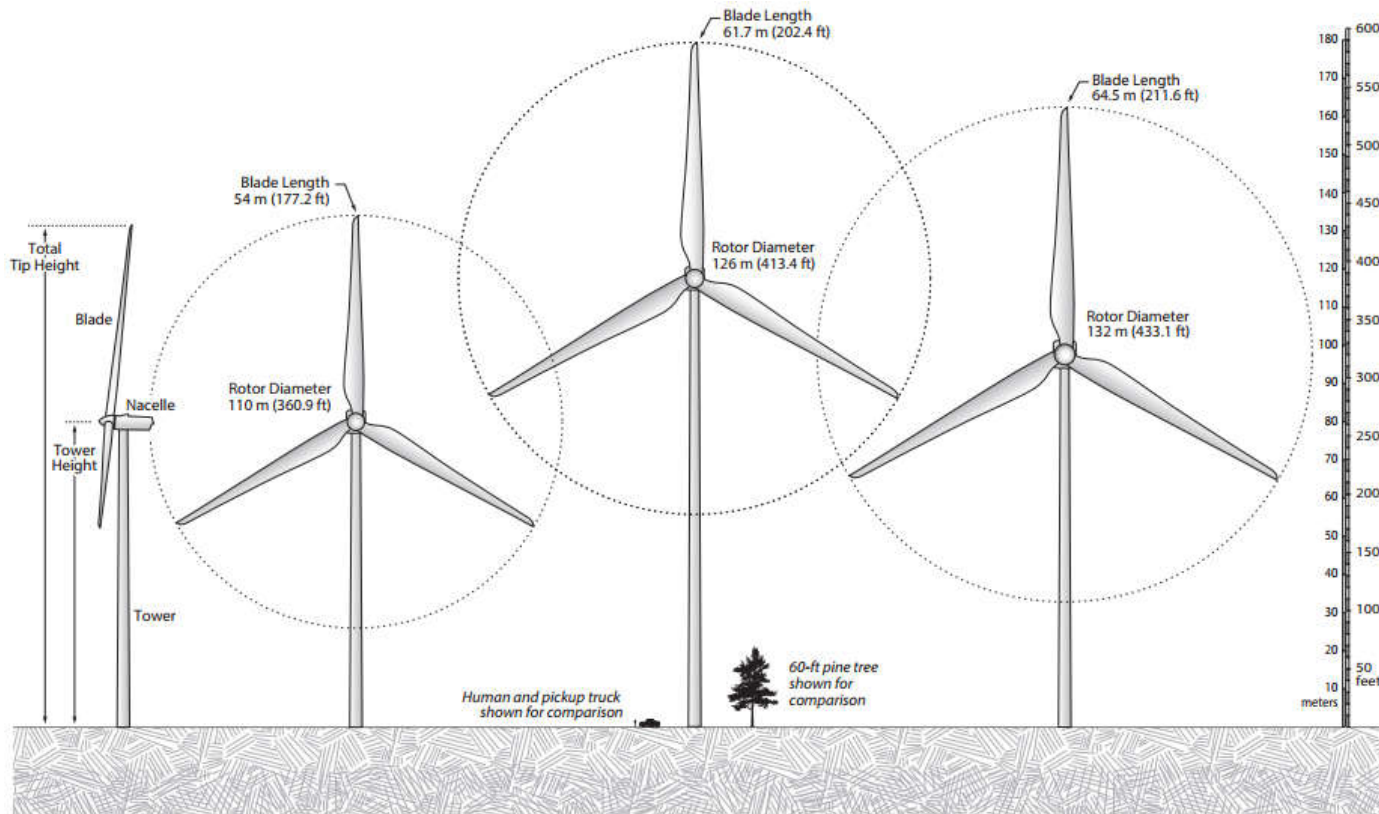
Existing transmission lines (blue)

New roads to be constructed (yellow)

Existing roads to be improved (purple)

# Typical Wind Turbine Profile

# Turbines



**Generic Turbine Profile**

**2.0 MW Turbine**  
Tower height: 80 m (262.5 ft)  
Total tip height: 135 m (442.9 ft)

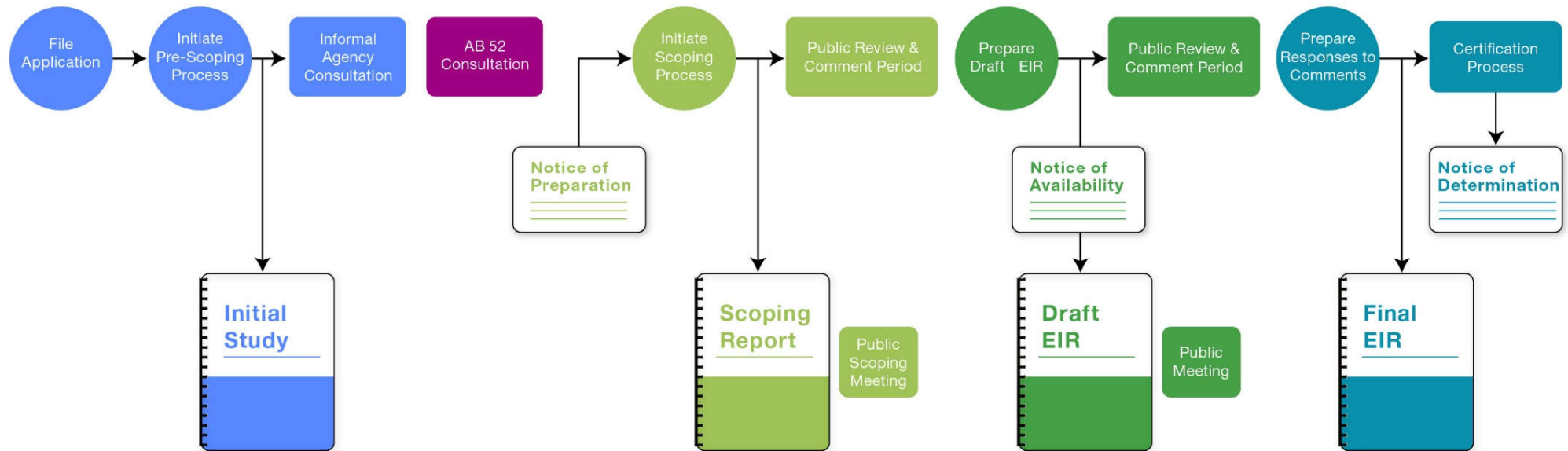
**3.45 MW Turbine**  
Tower height: 117 m (383.9ft)  
Total tip height: 180 m (590.6 ft)

**3.465 MW Turbine**  
Tower height: 97 m (318.2ft)  
Total tip height: 163 m (534.8 ft)



# CEQA Process Overview

## Use Permit 16-007: Fountain Wind Project CEQA Process



# Pre-scoping Activities

## Initial Agency Outreach

- Burney Fire Protection District
- California Department of Fish and Wildlife
- California Department of Transportation
- Central Valley Regional Water Quality Control Board
- Shasta County Assessor/Recorder
- Shasta County Air Quality Management District
- Shasta County Fire Department
- Shasta County Office of the Sheriff
- Shasta Mosquito and Vector Control District



# Pre-scoping Activities

## Initial Community Outreach

- Pit Rive Tribe
- Frontier Communications
- Wintu Audubon Society



# Pre-scoping Activities

County Consultation with Tribes (AB 52 Consultation)

- Letters sent to Tribes that had requested notification
- No responses were received within the timeframe
- Outreach will continue as part of the CEQA process



# Scoping

## Purpose

- Solicit input as to the scope and content of the EIR, including potential impacts of concern and mitigation measures or alternatives that should be considered

## Agency Scoping

- Responsible Agencies
- Trustee Agencies
- Other Agencies

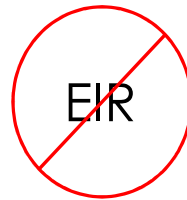
## Public Scoping





# Initial Study Determinations of No Impact

- Hazards and Hazardous Materials
  - Emission of hazardous emissions or handling of hazardous or acutely hazardous materials, substances, or waste within 0.25-mile of an existing or proposed school
  - Cause a safety hazard for people living or working near an airport or a private airstrip, including from noise
- Hydrology and Water Quality
  - Place housing in a flood zone
  - Place structures in a flood hazard area that would impede or redirect flood flows
  - Expose people or structures to a significant risk of loss, injury, or death involving flooding



- Agriculture Resources
- Biological Resources (Conflict with an HCP or NCCP)
- Land Use and Planning (division of established community)
- Mineral Resources
- Population and Housing
- Public Services (schools, parks, other governmental facilities)
- Recreation
- Transportation (public transit, bike, pedestrian facilities)
- Utilities and Service Systems (water or wastewater treatment, water supply, solid waste)

# Determinations of Less than Significant or Potential Significant Impact

- Everything else:

- Aesthetics
- Air Quality and GHG Emissions
- Biological Resources
- Cultural and Tribal Cultural Resources
- Forestry Resources
- Geo, Soils, and Paleo
- Hazards and Hazardous Materials
- Hydrology and Water Quality
- Land Use and Planning
- Noise
- Public Services
- Transportation
- Utilities and Service Systems

- Not addressed in the Initial Study:

- Communications Interference
- Energy
- Wildfire





# Scoping: Potential Alternatives

- Project Alternatives
  - Reasonable or feasible alternatives to the proposed project or its location
  - Capable of avoiding or substantially lessening any significant project impacts
  - Ok to impede to some degree the attainment of the objectives or be costlier
- No Project Alternative
  - What would be reasonably expected to occur in the foreseeable future if the proposed project were not approved
  - Based on current plans, consistent with available infrastructure and services

# Scoping: Potential Alternatives

## Proposed Project

- Use Permit 16-007
- Up to 100 wind turbines, each up to 100 feet tall
- Up to 347 megawatts of renewable (wind) energy generated on approximately 37,436 acres of private land
- Related environmental impacts and benefits

Correction: Up to 600 feet

## No Project Alternative

- No Use Permit
- No commercial-scale renewable energy project on the proposed site
- Continued commercial timber production use of the property
- Related environmental impacts and benefits

## Potential Alternatives

- How to reduce potential impacts to Aesthetics?
- How to reduce potential impacts to Biological Resources (e.g., to birds, bats, other wildlife, or to wetlands or other habitats)?
- How to reduce potential impacts to Cultural Resources or to Tribal Cultural Resources?
- How to reduce potential impacts from materials delivery or removal during construction or decommissioning?

# Public Participation Opportunities

Participate at this evening's meeting

Submit written comments on or before February 14, 2019

Submit comments using the following link:

<http://comment-tracker.esassoc.com/tracker/fountainwindeir/>

Stay informed

Request to receive project notices electronically

Keep an eye on the project website

Provide comments on the Draft EIR

Participate in public hearings on the project

# Public Participation Opportunities

Participate at this evening's meeting

Submit written comments on or before February 14, 2019

Submit comments using the following link:

<http://comment-tracker.esassoc.com/tracker/fountainwindeir/>

Stay informed

Request to receive project notices electronically

Keep an eye on the project website

Provide comments on the Draft EIR

Participate in public hearings on the project

# Public Comments this Evening

## Written Comments

Comment sheets

Computer terminal

## Oral Comments

Speaker Cards

State and spell your name

One person to speak at a time

Support everyone's participation

Respect others' opinions

